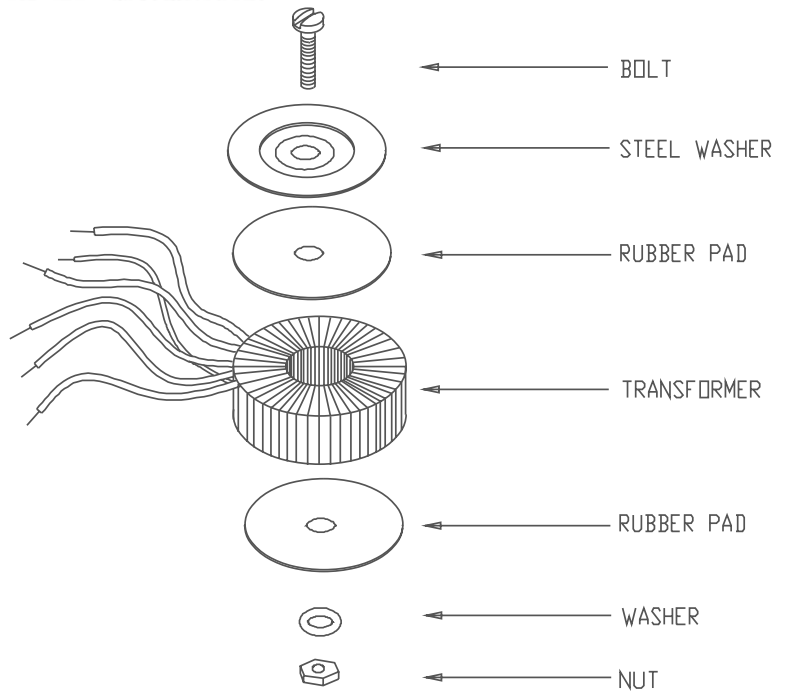


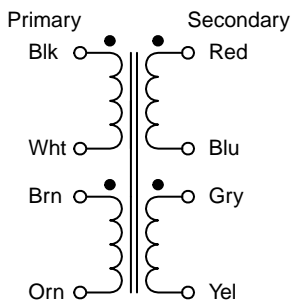


## TOROIDAL POWER L.V. RECTIFIER USE TRANSFORMERS

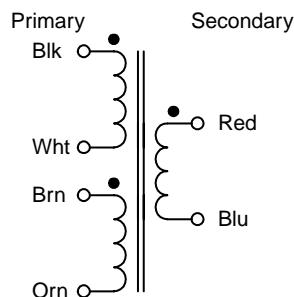
- Low profile
- Space saving and lightweight due to high efficiency toroidal design.
- Low EMF radiation.
- Dual primary 117/234 VAC, 50/60 Hz.
- Dual secondaries for series or parallel connections
- Chassis mount, complete with 2 rubber pads, steel washer and mounting hardware
- Minimum 8" long leads
- Hi-Pot test of 4,000V RMS
- CSA certified to C22.2 #66
- UL recognized to UL506
- CE certified to IEC 950



### Dual Secondary Schematic



### Single Secondary Schematic



### Dimension Table

Mtg. Ref.	Outside Diameter (in.)	Height (in.)	Weight (lbs.)
A	3.20	1.25	0.76
B	2.95	1.60	1.12
C	3.63	1.73	1.67
D	3.73	1.52	2.15
E	3.98	1.68	2.84
F	4.43	1.73	3.87
G	4.97	1.90	4.96
H	5.06	2.27	5.58
I	5.50	2.21	8.46
J	6.10	3.10	10.38
K	6.40	3.10	13.53
L	6.50	3.50	16.49
M	7.20	3.50	24.97

Selection Tables

Power

Primary 117/234 VAC 50/60 Hz.

Cat. No.	VA	VAC Secondary (RMS)		Dim. Ref.
		Series	Parallel	
182K6	15	12V ct @ 1.25A	6V @ 2.5A	A
182H9	15	18V ct @ .83A	9V @ 1.66A	A
182G12	15	24V ct @ .63A	12V @ 1.26A	A
182G15	15	30V ct @ .5A	15V @ 1A	A
182F18	15	36V ct @ .42A	18V @ .84A	A
182F22	15	44V ct @ .34A	22V @ .68A	A
182D110	15	220V ct @ 68ma	110V @ 136ma	A
182D117	15	234V ct @ 64ma	117V @ 128ma	A
182B240	15	-	240V @ 63ma	A
182L6	30	12V ct @ 2.5A	6V @ 5A	B
182K9	30	18V ct @ 1.67A	9V @ 3.34A	B
182K12	30	24V ct @ 1.25A	12V @ 2.5A	B
182J15	30	30V ct @ 1A	15V @ 2A	B
182H18	30	36V ct @ .83A	18V @ 1.66A	B
182G22	30	44V ct @ .68A	22V @ 1.36A	B
182E110	30	220V ct @ 136ma	110V @ 272ma	B
182E117	30	234V ct @ 128ma	117V @ 256ma	B
182D240	30	-	240V @ 125ma	B
182N6	50	12V ct @ 4.17A	6V @ 8.34A	C
182M9	50	18V ct @ 2.78A	9V @ 5.56A	C
182L12	50	24V ct @ 2.08A	12V @ 4.16A	C
182K15	50	30V ct @ 1.67A	15V @ 3.34A	C
182J18	50	36V ct @ 1.39A	18V @ 2.78A	C
182J22	50	44V ct @ 1.14A	22V @ 2.28A	C
182G110	50	220V ct @ 227ma	110V @ 454ma	C
182G117	50	234V ct @ 214ma	117V @ 428ma	C
182E240	50	-	240V @ 208ma	C
182Q6	80	12V ct @ 6.67A	6V @ 13.34A	D
182N9	80	18V ct @ 4.44A	9V @ 8.88A	D
182M12	80	24V ct @ 3.33A	12V @ 6.66A	D
182M15	80	30V ct @ 2.67A	15V @ 5.34A	D
182L18	80	36V ct @ 2.22A	18V @ 4.44A	D
182L22	80	44V ct @ 1.82A	22V @ 3.64A	D
182K30	80	60V ct @ 1.33A	30V @ 2.66A	D
182H110	80	220V ct @ 364ma	110V @ 728ma	D
182H117	80	234V ct @ 342ma	117V @ 684ma	D
182F240	80	-	240V @ 333ma	D
182Q9	120	18V ct @ 6.67A	9V @ 13.34A	E
182P12	120	24V ct @ 5A	12V @ 10A	E
182N15	120	30V ct @ 4A	15V @ 8A	E
182M18	120	36V ct @ 3.33A	18V @ 6.66A	E
182M22	120	44V ct @ 2.73A	22V @ 5.46A	E
182L30	120	60V ct @ 2A	30V @ 4A	E
182J110	120	220V ct @ 545ma	110V @ 1.09A	E
182J117	120	234V ct @ 513ma	117V @ 1.02A	E
182G240	120	-	240V @ .5A	E
182Q12	160	24V ct @ 6.67A	12V @ 13.34A	F
182P15	160	30V ct @ 5.33A	15V @ 10.66A	F
182N18	160	36V ct @ 4.44A	18V @ 8.88A	F
182N22	160	44V ct @ 3.64A	22V @ 7.28A	F
182M30	160	60V ct @ 2.67A	30V @ 5.34A	F
182K110	160	220V ct @ 727ma	110V @ 1.45A	F
182K117	160	234V ct @ 684ma	117V @ 1.37A	F
182H240	160	-	240V @ 667ma	F

Primary 117/234 VAC 50/60 Hz.

Cat. No.	VA	VAC Secondary (RMS)		Dim. Ref.
		Series	Parallel	
182S12	225	24V ct @ 9.38A	12V @ 18.76A	G
182H15	225	30V ct @ 7.5A	15V @ 15A	G
182G18	225	36V ct @ 6.25A	18V @ 12.5A	G
182P22	225	44V ct @ 5.11A	22V @ 10.22A	G
182F30	225	60V ct @ 3.75A	30V @ 7.5A	G
182L110	225	220V ct @ 1.02A	110V @ 2.04A	G
182L117	225	234V ct @ .96A	117V @ 1.92A	G
182J240	225	-	240V @ .94A	G
182T12	300	24V ct @ 12.5A	12V @ 25A	H
182S15	300	30V ct @ 10A	15V @ 20A	H
182P30	300	60V ct @ 5A	30V @ 10A	H
182L60	300	120V ct @ 2.5A	60V @ 5A	H
182M110	300	220V ct @ 1.36A	110V @ 2.72A	H
182M117	300	234V ct @ 1.28A	117V @ 2.56A	H
182K240	300	-	240V @ 1.25A	H
182S24	500	48V ct @ 10.42A	24V @ 20.82A	I
182R30	500	60V ct @ 8.33A	30V @ 16.66A	I
182N60	500	120V ct @ 4.17A	60V @ 8.34A	I
182P110	500	220V ct @ 2.27A	110V @ 4.54A	I
182N117	500	234V ct @ 2.14A	117V @ 4.28A	I
182L240	500	-	240V @ 2.08A	I
182T24	625	48V ct @ 13.02A	24V @ 26.04A	J
182S30	625	60V ct @ 10.42A	30V @ 20.84A	J
182P60	625	120V ct @ 5.21A	60V @ 10.42A	J
182Q110	625	220V ct @ 2.84A	110V @ 5.68A	J
182P117	625	234V ct @ 2.67A	117V @ 5.34A	J
182M240	625	-	240V @ 2.6A	J
182U24	750	48V ct @ 15.63A	24V @ 31.26A	K
182T30	750	60V ct @ 12.5A	30V @ 25A	K
182Q60	750	120V ct @ 6.25A	60V @ 12.5A	K
182R110	750	220V ct @ 3.41A	110V @ 6.82A	K
182Q117	750	234V ct @ 3.21A	117V @ 6.42A	K
182N240	750	-	240V @ 3.13A	K
182V24	1000	48V ct @ 20.8A	24V @ 41.7A	L
182U30	1000	60V ct @ 16.7A	30V @ 33.3A	L
182R60	1000	120V ct @ 8.3A	60V @ 16.7A	L
182S110	1000	220V ct @ 4.5A	110V @ 9.1A	L
182R117	1000	234V ct @ 4.3A	117V @ 8.5A	L
182P240	1000	-	240V @ 4.17A	L
182V40	1500	80V ct @ 18.8A	40V @ 37.5A	M
182T60	1500	120V ct @ 12.5A	60V @ 25A	M
182U110	1500	220V ct @ 6.8A	110V @ 13.6A	M
182T117	1500	234V ct @ 6.4A	117V @ 12.8A	M
182Q240	1500	-	240V @ 6.3A	M

CANADA

Phone: (519) 822-2960 Fax: (519) 822-0715

USA

Phone: (716) 651-0086 Fax: (716) 651-0726



© 2000

**HAMMOND**  
MANUFACTURING™  
www.hammondmfg.com