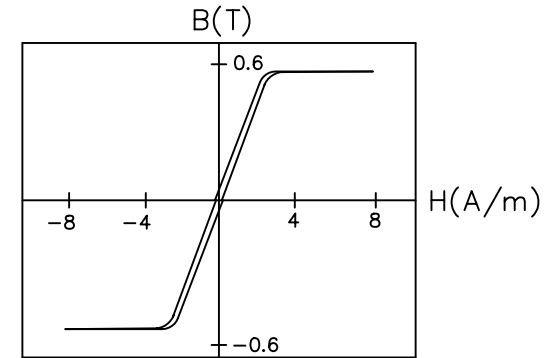
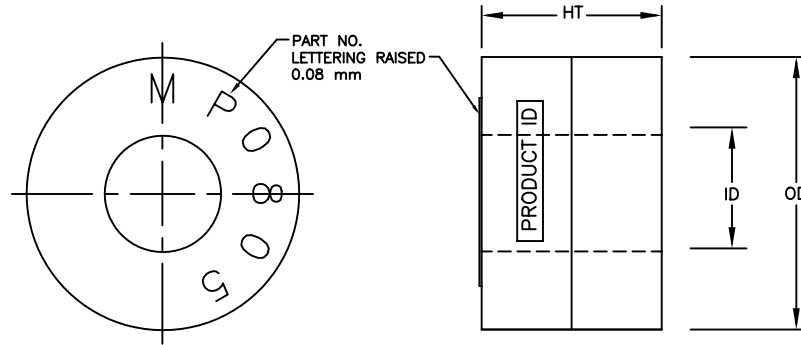


MP0805X4AF



TYPICAL B-H LOOP

Boxed Core Specifications				Bare Core Specifications		
PART NO.	OD mm	ID mm	HT mm	OD mm	ID mm	HT mm
MP0805X4AF	9.6	4.0	6.3	8.48	5.00	4.76
Tolerance (mm)	±0.3	±0.3	±0.3			

Performance Specifications						
l_m	A_c	Mass	Vol	W_a	$W_a A_c$	A_l
cm	cm ²	g	cm ³	cm ²	cm ⁴	μH
2.12	0.066	1.11	0.14	0.13	0.008	≥ 28.3

Box Designation (X)	Material DuPont	Manufacturer UL File #	Manufacturer Flammability Rating	Manufacturer Recommended Temperature
P	ZYTEL 70G33L	E41938	HB	120°C
L	ZYTEL FR50	E41938	94 V0	130°C
V	RYNITE FR530L	E69578	94 V0	150°C

A_l is measured at 1 kHz, 2.0 mA/cm.

l_m = mean magnetic path length
 A_c = net cross-sectional area
 W_a = core window area

NOTE:

- PART IDENTIFICATION CODE AND MANUFACTURING DATE CODE ARE PRINTED ON CURVED SURFACE.
- ALL MEASUREMENTS ARE DONE AT ROOM TEMPERATURE.
- MAXIMUM CONTINUOUS OPERATING TEMPERATURE IS 90°C (IRRESPECTIVE OF TYPE OF BOX USED.)

MAGNETIC TOLERANCES:
 PERMEABILITY ≥ 72,000
 MASS ± 3%

CORE MATERIAL:
 METGLAS® ALLOY 2714A.

NOTICE :- THIS DRAWING, THE PROPERTY OF HITACHI METGLAS IS FURNISHED SUBJECT TO RETURN ON DEMAND AND THE CONDITION THAT THE INFORMATION AND TECHNOLOGY EMBODIED HEREIN SHALL NOT BE DISCLOSED OR USED AND THE DRAWING SHALL NOT BE REPRODUCED OR COPIED IN WHOLE OR IN PART EXCEPT AS PREVIOUSLY AUTHORIZED IN WRITING. ANY PERSON WHO MAY RECEIVE OR OBSERVE THIS DESIGN WILL BE HELD STRICTLY LIABLE FOR ANY VIOLATION WHETHER WILLFUL OR NEGLIGENT.	TOLERANCES UNLESS OTHERWISE SPECIFIED		NO.	REVISION	BY	APPR.	DATE	DIMENSIONS	MM	DESCRIPTION	MAGNAPERM(FLAT LOOP)	SHEET	PART NO.	REV. NO.		
				1.	ADDED TOL. ≥ TO A_l	VS	RK	01/30/02	SCALE	N.T.S	MATERIAL	MAGNETIC TOROIDAL CORE	1 OF 1	MP0805X4AF	2	
				2.	ADDED NOTE # 3 & PART NO. WAS MP0805V4AF.COMPANY NAME WAS HONEYWELL.	VS	RK	02/10/04	PROJECTION	THIRD ANGLE	MATERIAL	AS NOTED				
								HITACHI METGLAS			SR	07/12/01	SR	07/19/01	RH, RM, ST	07/19/01
											DRAWN	DATE	CHECKED	DATE	APPROVED	DATE