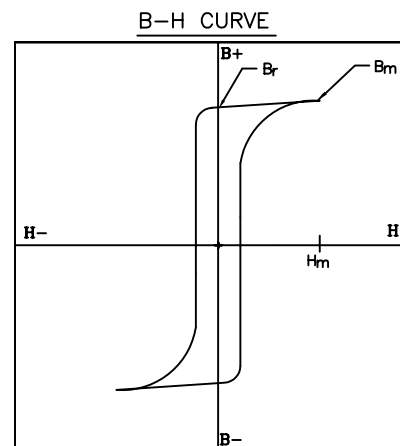
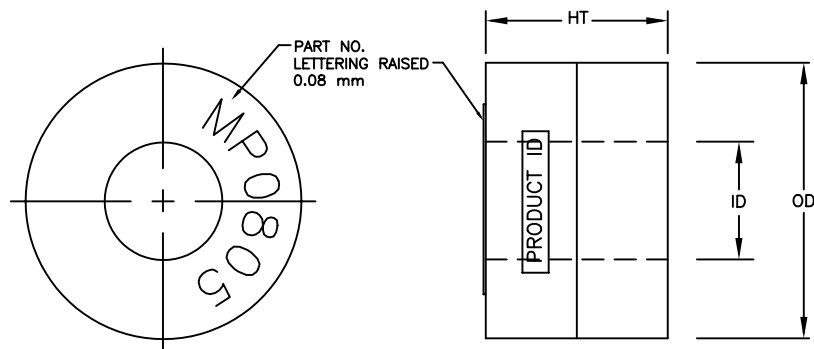


MP0805X4AS



Boxed Core Specifications				Bare Core Specifications		
PART NO.	OD mm	ID mm	HT mm	OD mm	ID mm	HT mm
MP0805X4AS	9.6	4.0	6.3	8.48	5.00	4.76
Tolerance (mm)	±0.3	±0.3	±0.3			

Performance Specifications						
$I_m$	$A_c$	Mass	Vol	$W_a$	$W_a A_c$	Core Loss
cm	cm <sup>2</sup>	g	cm <sup>3</sup>	cm <sup>2</sup>	cm <sup>4</sup>	mW
2.12	0.066	1.07	0.14	0.13	0.008	≤ 226

Core Loss is measured at 50 kHz/0.5 Oe.

Box Designation (X)	Material DuPont	Manufacturer UL File #	Manufacturer Flammability Rating	Manufacturer Recommended Temperature
P	ZYTEL 70G33L	E41938	HB	120°C
L	ZYTEL FR50	E41938	94 V0	130°C
V	RYNITE FR530L	E69578	94 V0	150°C

Sq Ratio <sup>1</sup>	Bsat	Br <sup>1</sup>	Total <sup>2</sup> Flux
Br/Bm	tesla	tesla	μWb
≥86%	0.57	≥0.46	7.6

<sup>1</sup> Measured at 5 kHz/0.5 Oe ( $H_m$ )

<sup>2</sup> Calculated value

- PART IDENTIFICATION CODE AND MANUFACTURING DATE CODE ARE PRINTED ON CURVED SURFACE.
- ALL MEASUREMENTS ARE DONE AT ROOM TEMPERATURE.
- MAXIMUM CONTINUOUS OPERATING TEMPERATURE IS 90°C (IRRESPECTIVE OF TYPE OF BOX USED)

TOLERANCE:  
MASS ±3%

CORE MATERIAL:  
METGLAS<sup>®</sup> ALLOY 2714A.

$I_m$  = mean magnetic path length  
 $A_c$  = net cross-sectional area  
 $W_a$  = core window area

**NOTICE :-**  
THIS DRAWING, THE PROPERTY OF HITACHI METGLAS IS FURNISHED SUBJECT TO RETURN ON DEMAND AND THE CONDITION THAT THE INFORMATION AND TECHNOLOGY EMBODIED HEREIN SHALL NOT BE DISCLOSED OR USED AND THE DRAWING SHALL NOT BE REPRODUCED OR COPIED IN WHOLE OR IN PART EXCEPT AS PREVIOUSLY AUTHORIZED IN WRITING. ANY PERSON WHO MAY RECEIVE OR OBSERVE THIS DESIGN WILL BE HELD STRICTLY LIABLE FOR ANY VIOLATION WHETHER WILLFUL OR NEGLIGENT.

TOLERANCES UNLESS OTHERWISE SPECIFIED

NO.	REVISION	BY	APPR.	DATE	DIMENSIONS	MM	DESCRIPTION	MAGAMP MAGNETIC TOROIDAL CORES	SHEET	PART NO.	REV. NO.		
1.	ADDED PART # ON BOX		SR	05/26/02	SCALE	N.T.S	MATERIAL	AS NOTED	1 OF 1	MP0805X4AS	2		
2.	ADDED NOTE # 3 & COMPANY NAME WAS HONEYWELL	VS	RK	02/07/04	PROJECTION	THIRD ANGLE							
							<b>HITACHI METGLAS</b>	S.K	09/24/01	SR	09/25/01	RH, RM, ST	09/26/01
								DRAWN	DATE	CHECKED	DATE	APPROVED	DATE